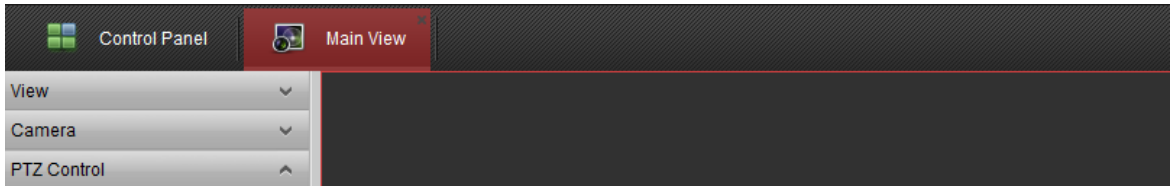


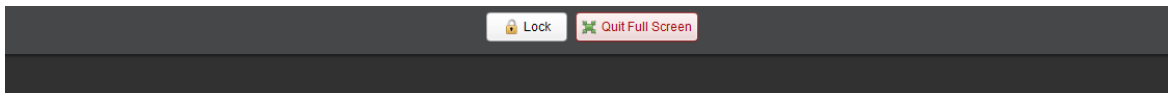
# iVMS-4200 V2.02.00.04 Release Notes

## Live View

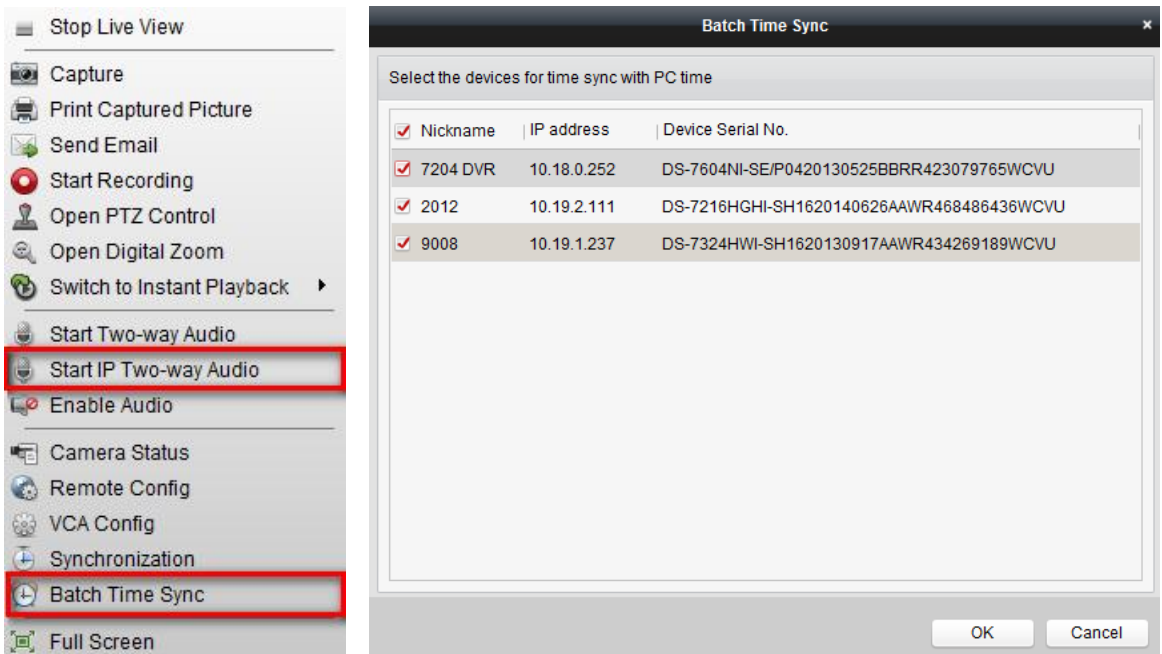
1. Under auto-change stream live view mode, iVMS-4200 can automatically connect to device's main stream if sub stream connection fails.
2. Support collapse and expand the view group (Now the view group can be collapsed.)



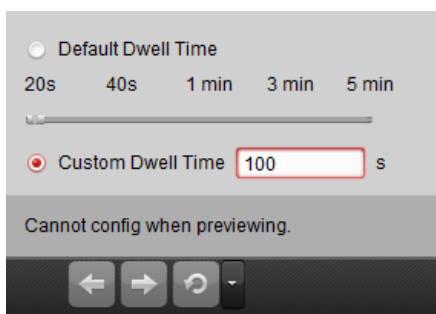
3. Support lock screen in full screen live view mode. (Lock menu appears while moving mouse to the top of full screen live view window.)



4. Support batch time sync for selected devices.  
(Right click on live view window >> Batch time sync)



5. Support start two-way audio between iVMS-4200 client software and internal IP camera via NVR. (Right click on live view window >> Start IP two-way audio)
6. Support custom dwell time ranging from 20 ~ 300 seconds.



### Remote Playback

1. Support playback the record file of offline IP channel from NVR/CVR.
2. Modify the default search and playback group as camera group. (Previous was view group.)
3. Optimize the smart playback function, now it's more friendly and easier-to-use.
4. More record file types are increased in the search options such as PIR, wireless, emergency alarm, etc.
5. Support VCA event search and VCA playback.

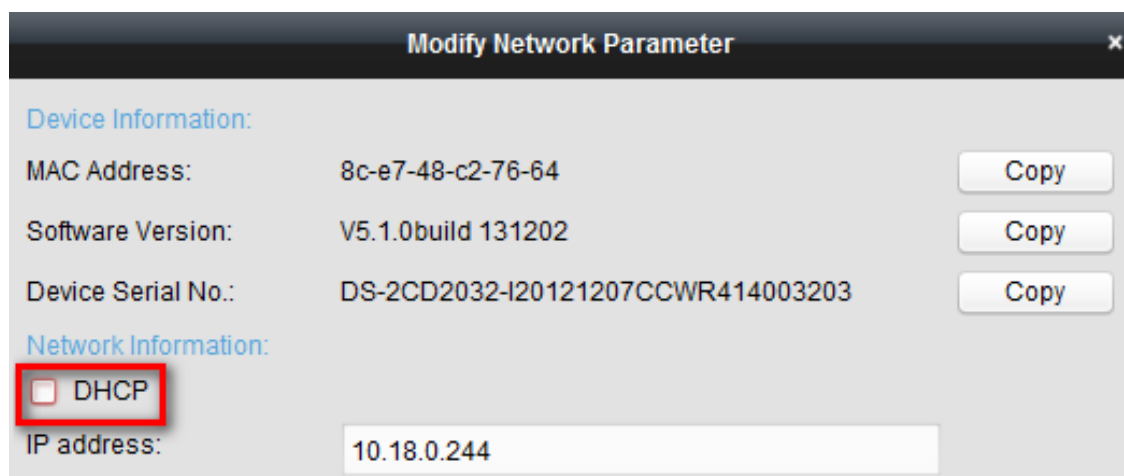
### Device Management

1. Support Management for multiple new device types: Some new device types can be added and managed by the client, including the fisheye camera, device registered on Cloud service, intelligent device, transcoder, video wall controller, third-party encoding device, etc. (iVMS-4200 does not support directly live view or playback the video of third-party encoding device, here third-party device are mainly added for decoding and display on the video wall via decoders.)

2. By default imported camera is now named as camera no. plus device model.

E.g.:  Camera1\_2032

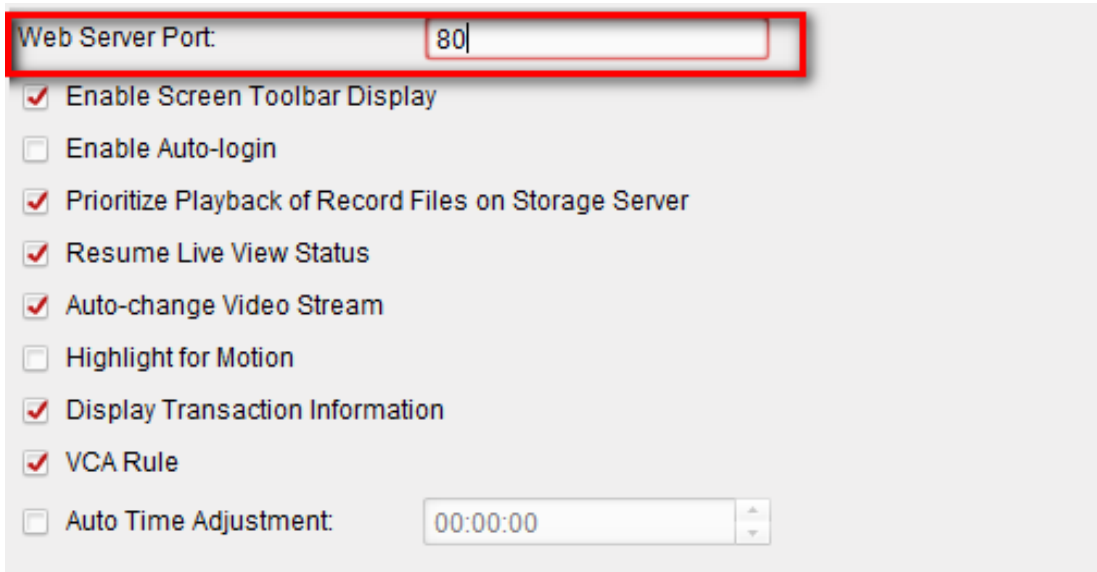
3. Support enable/disable the DHCP of online detected encoding/decoding device  
(Online device list >> Select a device and modify netinfo >> login, check/uncheck DHCP box)



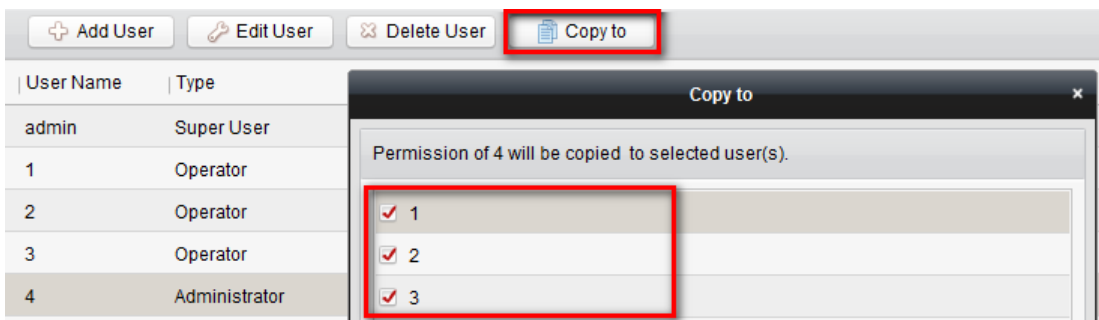
### Other

1. Compatible to Windows 8/8.1.

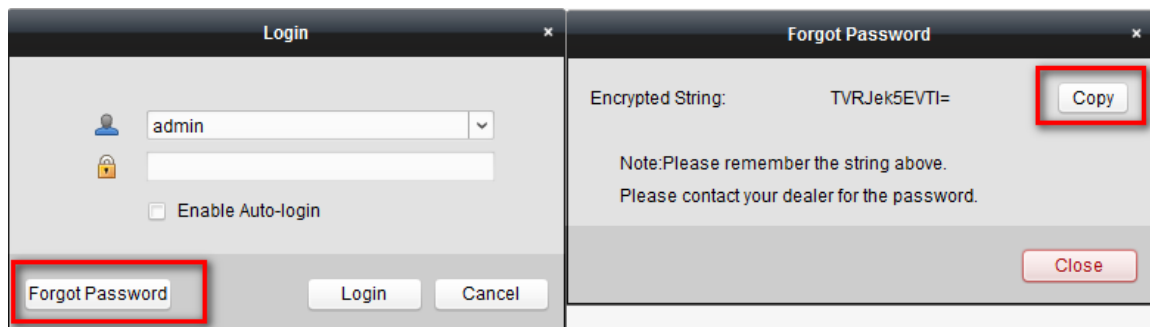
- Support configure the web server port in system configuration, enable/disable highlight for motion, display transaction information, VCA rule as well.



- Add a permission type of quitting iVMS-4200 to the user account, now an operator without permission of quitting cannot exit the iVMS-4200.
- Support copy an administrator's permission to other users.



- Support password retrieve: If you forgot your password, please click on forgot password button of the login page, copy the encrypted string and send the sting to Hikvision technical support, we'll help find your password.



- Other Changes

### Known Bug

- Go to event management >> camera event, and select a camera from the camera list, right now if you delete the device which includes the selected camera, will cause iVMS-4200 stops working.