

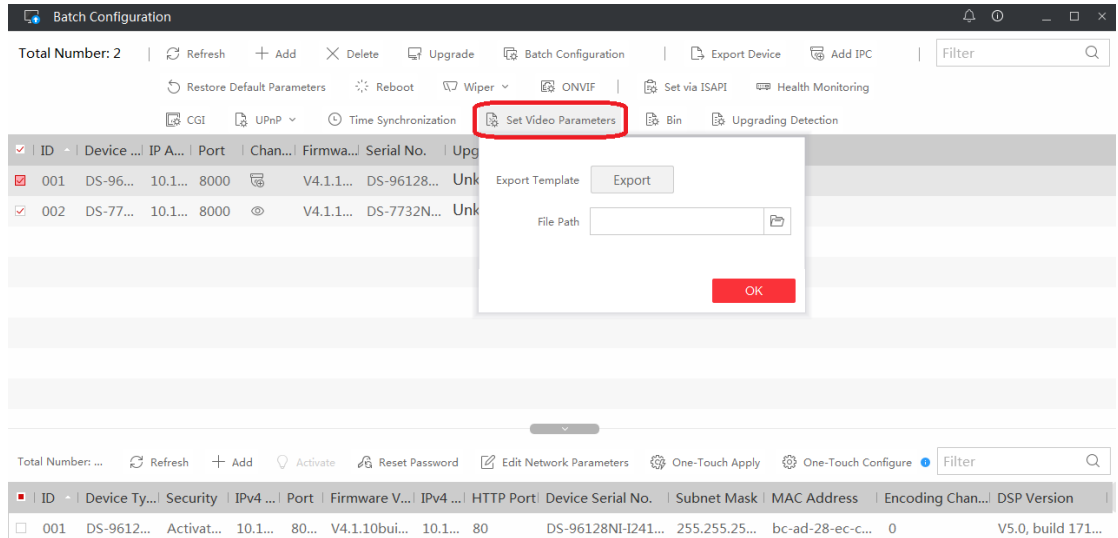
BatchConfigTool V3.0.0.4

Release Notes

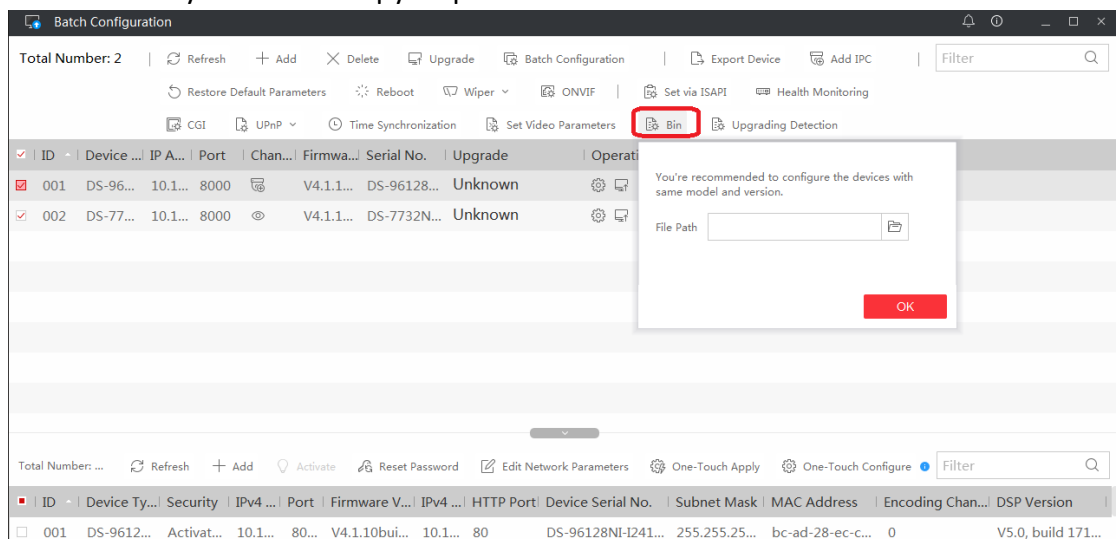
(2018-6-8)

V3.0.0.4 Key Updates

1. Support configuring the video parameters, such as stream type, resolution, bitrate, etc., for one or more devices by importing a CSV file.



2. Support setting system parameters by importing a bin file exported from a device which you want to copy its parameters.



3. Support setting device parameters via ISAPI protocol.

The screenshot shows the 'Batch Configuration' window with a toolbar containing various actions. The 'Set via ISAPI' button is highlighted with a red box. Below the toolbar is a table with the following data:

ID	Device Type	IP Address	Port	Channel	Firmware Version	Serial No.	Upgrade	Operation	Status
001	DS-96...	10.1...	8000		V4.1.1...	DS-96128...	Unknown		Online
002	DS-77...	10.1...	8000		V4.1.1...	DS-7732N...	Unknown		Online

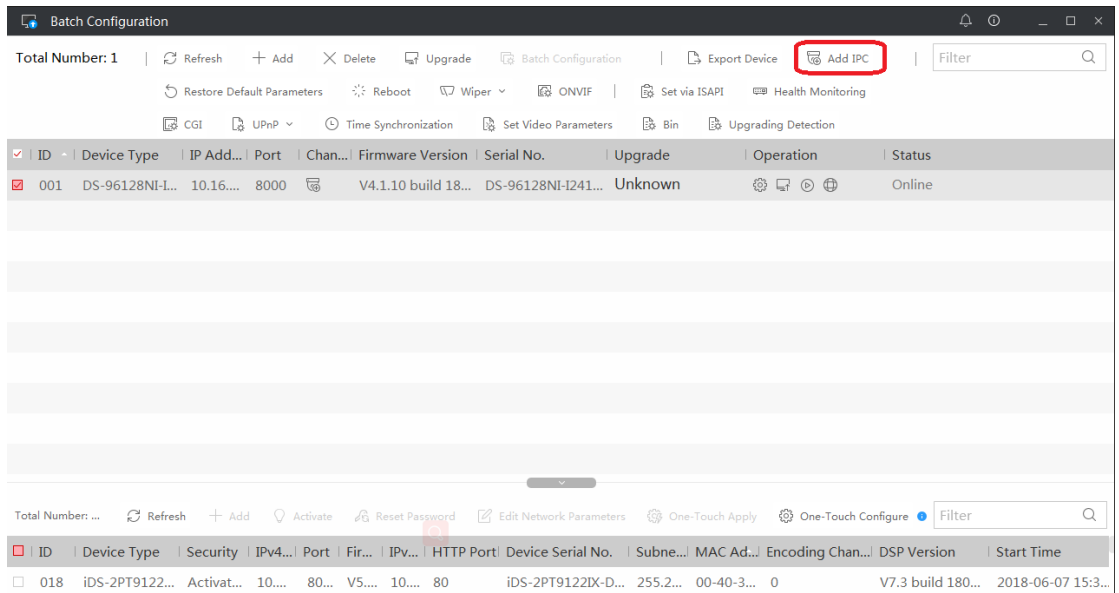
4. Support one-touch configuration for online devices.

The screenshot shows the 'Batch Configuration' window with a toolbar containing various actions. The 'One-Touch Apply' and 'One-Touch Configure' buttons are highlighted with red boxes. Below the toolbar is a table with the following data:

ID	Device Type	Security	IPV4 ...	Port	Firmware Version	IPV4 ...	HTTP Port	Device Serial No.	Subnet Mask	MAC Address	Encoding Chan...	DSP Version
001	DS-96128NI-L...		10...	8000	V4.1.10...	DS-96128NI-I241...						
002	DS-7732NX-1...		10...	8000	V4.1.11...	DS-7732NX-I4/4...						

ID	Device Type	Security	IPV4 ...	Port	Firmware Version	IPV4 ...	HTTP Port	Device Serial No.	Subnet ...	MAC ...	Encoding Chan...	DSP Version	St
001	Blazer Pro/1...	Activat...	10.1...	80...	V4.1.10build 17...	10.1...	80	Blazer Pro/128/1...	255.255...	bc-ad...	0	V5.0, build 171...	2C
002	DS-96128NI-...	Activat...	10.1...	80...	V4.1.10build 18...	10.1...	80	DS-96128NI-I241...	255.255...	bc-ad...	0	V5.0, build 171...	2C

5. Support adding network cameras to NVR or hybrid DVR.



6. Support viewing and generating report of the health status including the device status (HDD, resource, and camera), network, and port.

