

HIK INSIGHT

- ✓ Message from CEO of Hikvision South Africa, Sean Liu
- ✓ Hik-ePartner is Officially Launched
- ✓ Mobile Enforcement Solution

MERRY

Christmas

AND
HAPPY NEW YEAR!

CONTENT

01 PRODUCTS

AcuSense Smart-linkage PTZ Camera

Radar PTZ – Double Check, Accurate Tracking

Full Height Turnstile

Long Range Radar

LCD Video Wall

02 SOLUTION

Mobile Enforcement Solution for Single Station

Visualized Patrol with Efficient and Secured Recording

03 Technical

Alarm Product AX PRO V1.2.1 Release Note

IP Cam G3 Platform V5.5.150_200927 Release Note

Hik-Connect 4.9.0 Release Note

04 Hik News

Hik-ePartner is Officially Launched

Hikvision introduces dedicated series in its DeepinView camera line

Monthly HIK INSIGHT

Issued by HIKVISION SOUTH AFRICA

All rights reserved.

Technical Support:

support.sa@hikvision.com

Call Center:

+27 (0)10 110 8228


WhatsApp Group:

+27 (0)60 441 3111

Social Media

Hikvision South Africa





With the holiday approaching, on behalf of Hikvision South Africa, I would like to take this opportunity to express our heartfelt gratitude to all your tremendous support and dedication.

Undoubtedly, 2020 is a very turbulent year for all of us. During the challenging year, it's so great to have all of you standing along with us. We have worked together to navigate those difficult moments and achieved much success. We are also proud of the positive contributions we made to improve the safety and efficiency of local communities. I would like to attribute the mutual success to the dedicated work from all of you. We wouldn't be where we are without the contributions made by each and every one of you, and we greatly appreciate this.

Again, Hikvision highly values our great partnership and will continuously be fully committed to all of you. I sincerely wish you a very happy holiday and look forward for a successful and prosperous year for our business in 2021.

See far, go further.

Sean Liu
CEO of Hikvision South Africa



AcuSense Smart-linkage PTZ Camera

Vigilant Focus on Every Detail. Auto-alerts for Smart Responses.



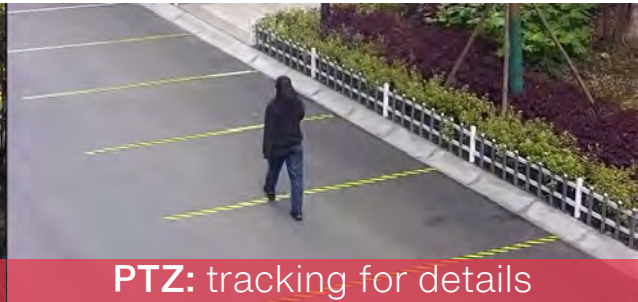
Selling Points

01 Linkage Tracking See the whole and see details



Bullet: for the whole scene

Panorama view: human/vehicle detection



PTZ: tracking for details

Detail view: zooming in and tracking

02

Focus on Human/Vehicle Act at Real-time

Strobe light and audio alarm to warn intruders off



03

A fully integrated camera providing real multiple functionality



Technical Specifications

Bullet

- 4 MP; 4 mm
- 0.005 lux @ F1.6
- 120 dB

30 m IR distance

Flashing light

PTZ

- 2 MP, 32x
- 0.005 lux @ F1.2
- 120 dB

150 m IR distance

Built-in speaker

DS-2SE7C124IW-AE(32X/4)(S5)

Radar PTZ — Double Check, Accurate Tracking

With built-in radar, the radar PTZ is not affected by the harsh environment. It can detect moving targets around the clock accurately, and link with the PTZ to detect, track, and capture.

It mainly used at borders, prisons and posts, armed police forces, power grids, railways, airports and other perimeter security places

Selling Points

01 All-weather and all-day

- Millimeter wave radar
- Accurate detection with Video double checks
- Unaffected by bad weather

02 Wide detection range Long detection distance

- 90° wide angle
- human: 100 m; vehicle: 120 m

Technical Specifications

Radar

- **100 m detection range, 90° coverage**
- Detects up to 32 targets at the same time
- Distance accuracy: ± 1 m
- Radar event: intrusion, line crossing

All-in-one Design

- Radar inside
- One IP only
- All-in-one design, easy installation

IR light + White light

- IR: 200 m
- White light visual warning: 100 m

PTZ

- 40X zoom
- 4 MP @ 60 fps
- 0.0002 lux
- 140 dB WDR
- Target tracking
- Video double check



IDS-2SR8141XS-AB(40X)(T2)

Full Height Turnstile

Full height turnstile with high reliability and suitable for outdoor use. The waterproof design of the whole structure and the segmented installation design make the installation and maintenance of this product very convenient.

Selling Points

01 Better performance in anti-tailgating

02 Different lane width

Value series: 600 mm

Pro series: 650 mm

03 MCBF: More than 2 million times



Models

DS-K3H4411-120/Pg-Dm65

Pro series with single lane

DS-K3H4421-120/Pg-Dm65

Pro series with dual lanes

DS-K3H4410-120/Pg-Dm60

Value series with single lane

DS-K3H4420-120/Pg-Dm60

Value series with dual lanes

Long Range Radar

Selling Points

01 Long detection range

Up to 500m/1500m detection range for people.

02 Multi-target tracking

Support up to 32/100 targets tracking simultaneously.

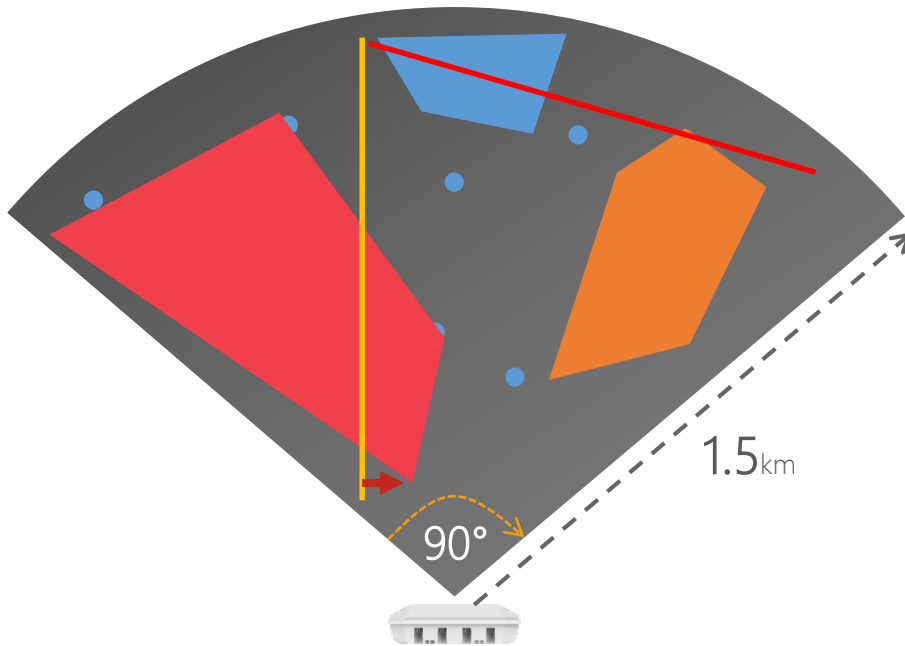
03 PTZ tracking

Up to 4 PTZs linked with one radar to achieve real-time tracking.

04 Self-defined zone

Up to 16 self-defined zones. Supports 3 types of zones: alarm zone, pre-alarm zone and bypass zone.

Detection Showcase



Models



DS-PRI500

500m radar

DS-PRI1215SR

1500m radar

Selling Points

01 Great displaying effect

Abundant color

Adopt advanced M182 chipsets to achieve 10-bit signal processing, lossless signal transmission, more extensive color gamut coverage, and more abundant color.

Wide View Angle

Great visual experience: support Vertical, Horizontal 178°.

02 Self-splicing

Optional interface

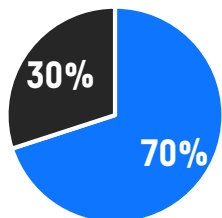
Simple self-splicing



splicing

03 High quality screen

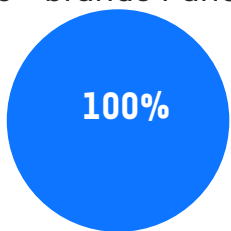
- A class
- A- class



3rd brands Panel

A class panel has better display effect

- A class



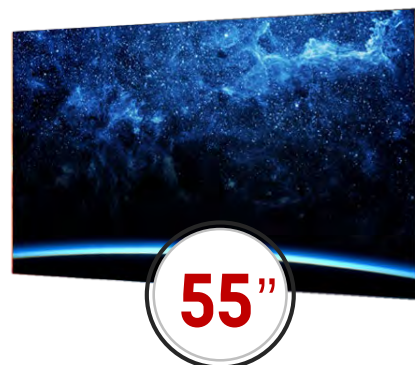
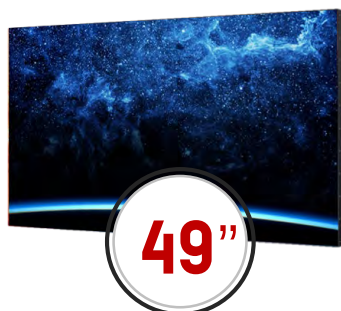
Hikvision Panel

There are 70% A class panel and 30% A- panel in the same batch.

We only use A class.

3rd may use A- class(20% lower cost)

Product Family



02 SOLUTION

Mobile Enforcement Solution for Single Station Visualized Patrol with Efficient and Secured Recording

Particular headaches for users

In traditional enforcement

- Lack of video system in traditional enforcement makes it difficult to provide evidence when there are disputes about law enforcement.
- The personal safety of the police officers cannot be guaranteed and they cannot call for help in case of emergency.

In traditional evidence recording

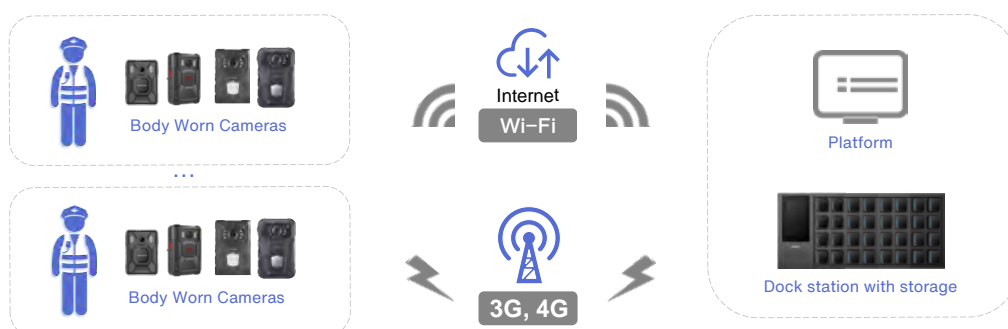
Traditional evidence management is based on ordinary video, which makes subsequent management and retrieval more difficult.

In data protection

Without encryption, information leak can be easy when the devices are lost.

How Hikvision solution works

Based on previous experience in and understanding about law enforcement work process, Hikvision released a totally new solution to support police officers. It contains video and data collection, and data management, with high data protection methods to prevent data leakage.



Visual enforcement

Providing a visual law enforcement system to record the patrol video as evidence.

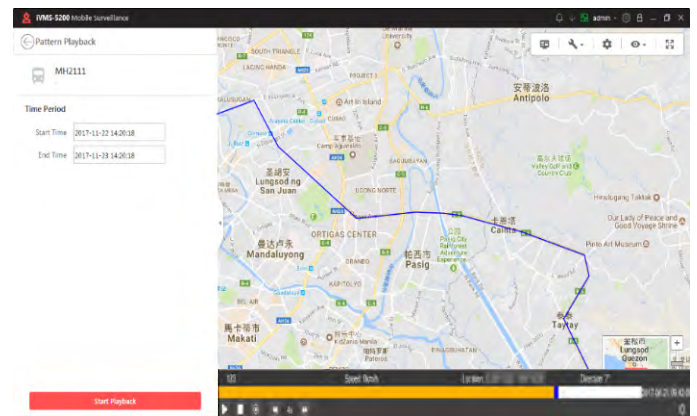
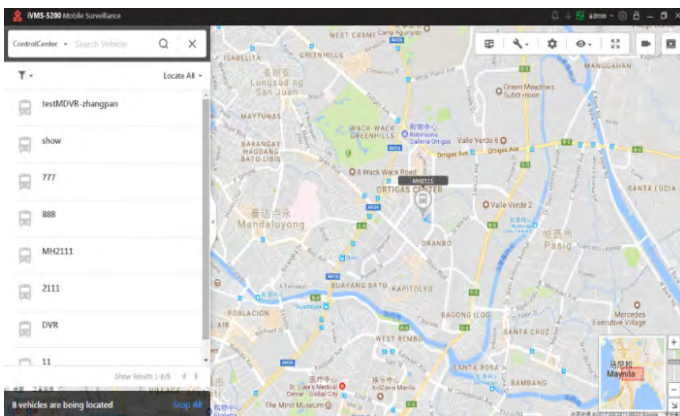
- **Visualization of law enforcement process**

Staff in police station can get real time video stream of police on duty so that they can easily understand the situation of enforcement.



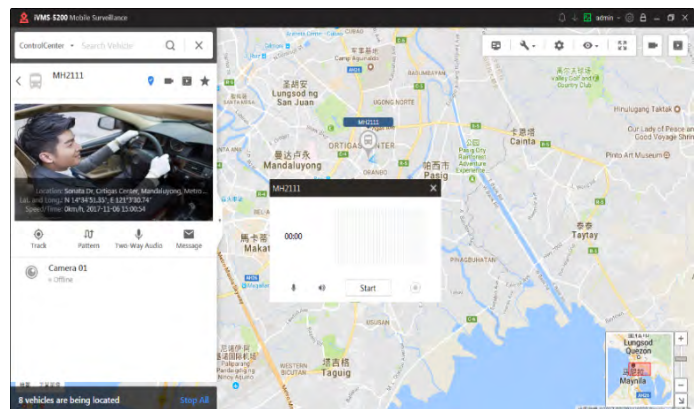
- **Real time GPS**

Through the application of GIS and the information from nearby monitoring points, the police station can get real time location. It helps a lot in emergency command and dispatching and improves work efficiency.



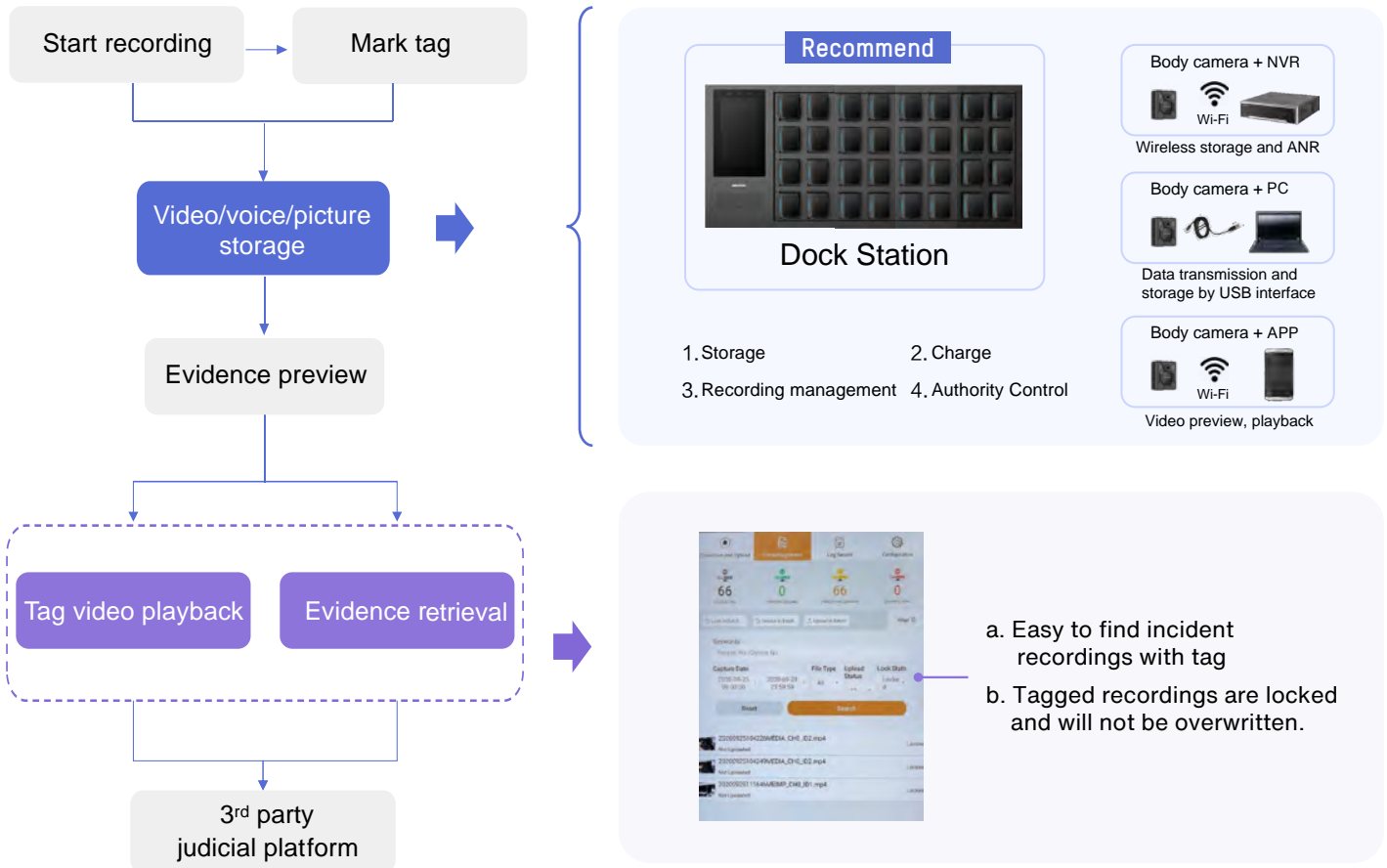
- **SOS one-button alarm**

This supports call for help in case of emergency, and guarantees the personal safety of the police on duty.



Efficient recording management

The system can sort out the important video tagged by police officers quickly, making it easy to retrieve the incidents happened during enforcement. In addition, these tagged video clips are locked and will not be overwritten.



Data security

A variety of data protection methods that cover every aspect.

- **Recorded footages**

Tagged video clips will be locked and cannot be overwritten in whole process.

- **Footage downloading**

Only authorized people can download video via Pin code.

- **Authority management**

Device login requires unique ID and PIN and the video in the device cannot be deleted.

- **Data storage**

The data is with Hikvision's encryption, so that only Hikvision's player can play the video.

- **Data encryption**


AES Encryption is supported to ensure data security in the whole process.


Product highlight

Bodycam


- **All-in-one compact design**

 More than 10 hours' high-definition video recording

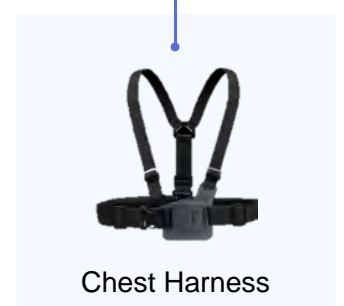
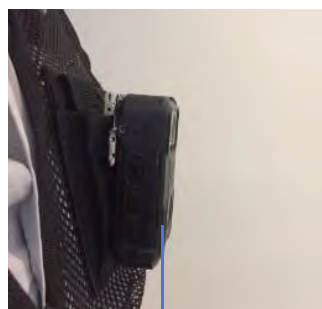
 Battery removable without shutting down the device

 Integrated with TFT LCD, battery, and GPS modules

 **IP67** Waterproof design with IP67, workable in extreme outdoor conditions

 Lightweight hardware design with anti-drop capability against 1.5-meter fall

- **A variety of accessories are available as you like**

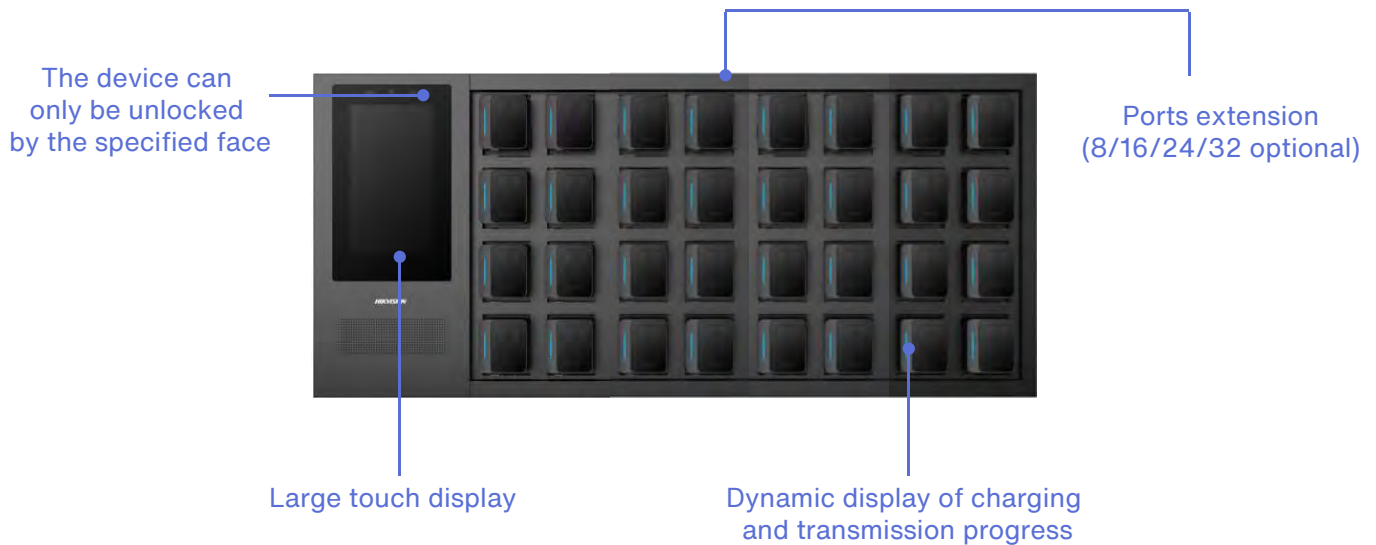


- Large recording button, easy to operate



Dock station

- Unlocks body camera bin by recognizing face to guarantee device safety.
 - Locks important data of body cameras to avoid data leak or deletion.
 - Supports data protection in sudden power cutoff.
 - ANR for data uploading to prevent data loss.
- Multiple users can be associated with one dock station.



03 Technical

Hik-ProConnect V 1.5.0 Release Notes

For more details please refer to the release note.

Download Link: <https://one.hikvision.com/#/link/XscUrvVoorSgvSaNDs46>

Extract passwords: BsiP

Added Function

1

Cloud Network Switch

- 1) The Portal and Mobile Client supports adding online network switch and adding network switch by Hik-Connect (P2P).
- 2) The following functions for network switch are supported.

Viewing network switch information including network status (online/offline), the number of online ports, and the latest inspecting time

Rebooting network switch and restarting port remotely

2

Health Monitoring

The Health Monitoring page supports displaying status of network switch.

3

Account Management

1. Optimized the registration. User provides email address and gets a verification code before entering other account information.
2. The Portal supports applying for authentication, which can be reviewed and approved by Hikvision.

4

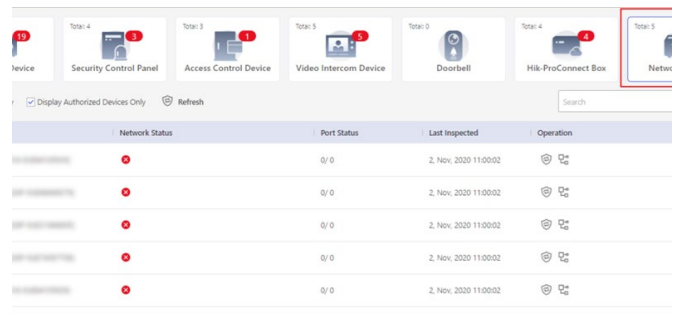
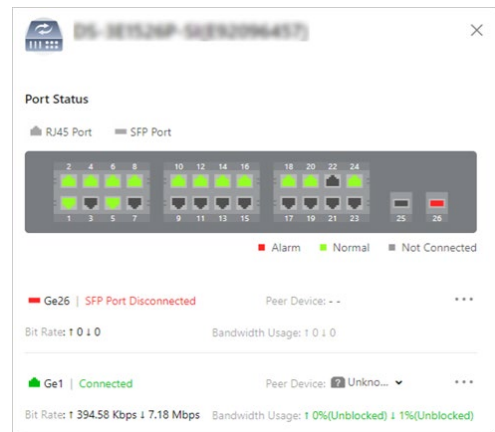
Home page

On the Home page of the Portal and Mobile Client, added Tutorial Center. In Tutorial Center, you can view video tutorials to learn more about Hik-ProConnect.

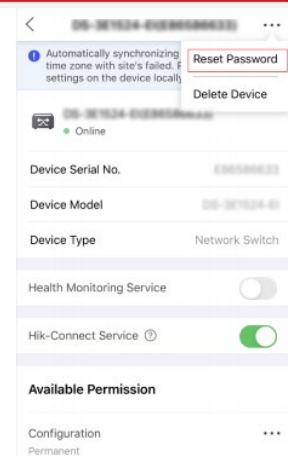
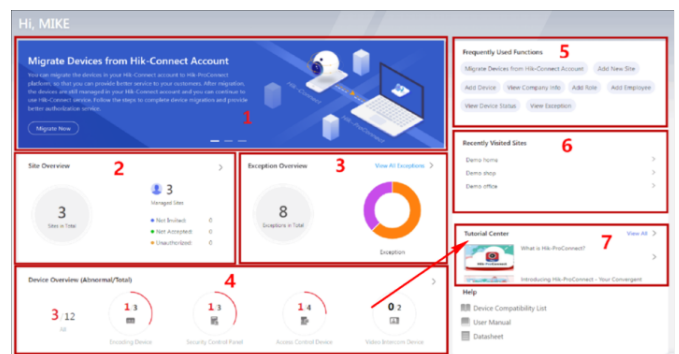
5

Device Management

1. The Portal and Mobile Client supports unbinding device from its current account.
2. The Portal and Mobile Client supports resetting device password when the Site Owner and the Installer both lost the password.



Network Status	Port Status	Last Inspected	Operation
●	0/0	2. Nov. 2020 11:00:02	🔒 ⚙️
●	0/0	2. Nov. 2020 11:00:02	🔒 ⚙️
●	0/0	2. Nov. 2020 11:00:02	🔒 ⚙️
●	0/0	2. Nov. 2020 11:00:02	🔒 ⚙️
●	0/0	2. Nov. 2020 11:00:02	🔒 ⚙️



Handheld Thermal DS-2TP31B-3AUF Release Note

For more details please refer to the release note and you can download firmware from hereunder link.

Download Link: <https://one.hikvision.com/#/link/cMlcAMUX60Z0kN6MPptw>

Extract passwords: D7DQ

Optimization

- 1** Added background temperature compensation algorithm.
Improved the temperature measurement accuracy when the device is used in environment background with high temperature (like 35°C in a tent).
- 2** Added temperature drift suppression algorithm.
Improved the stability of temperature measurement and fixed issues of noise in thermal image during cold booting.
- 3** Added Sensor ID info. in Device Information.
- 4** Fixed display abnormality of battery icon in some cases.



Temperature Screening Camera Release Notes

For more details please refer to the release note and you can download firmware from hereunder link.

Download Link: <https://one.hikvision.com/#/link/a6usf6ScdifdA4XvM9uR>

Extract passwords: z7Jq

Added Function

1

Fake face filtering algorithm

Added fake face filtering algorithm module in this version, in which the thermal channel also participated to distinguish the real and fake faces. Faces in picture or real faces behind the glass would not be detected any more.

V5.5.26 build 200917:



V5.5.32 build 201028:



Optimization

1

Improved the detection accuracy of dark mask and colorful mask.

2

Optimized the background temperature compensation algorithm.

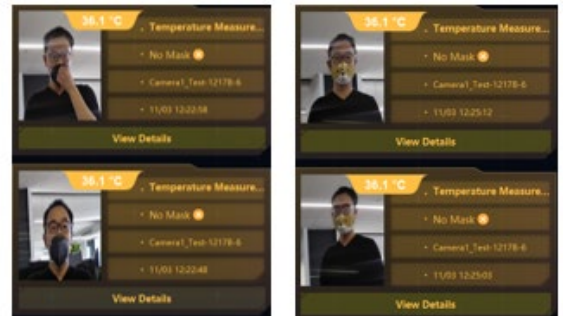
3

Optimized the temperature measurement model and increased the sensitivity of corresponding temperature range, which helped find someone running a fever more easily.

4

Raised the audio gain of default warning audio file for "/PA" devices (both alarm type Temperature Measurement and Mask Detection for all multiple languages).

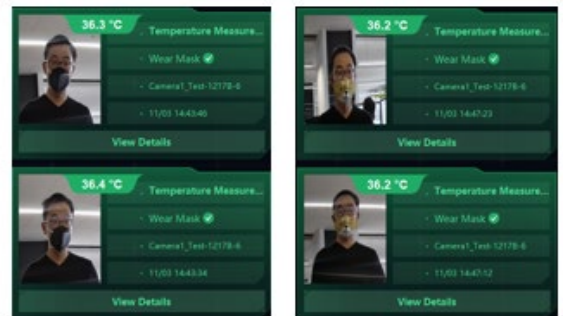
V5.5.26 build 200917:



Dark Black Mask

Colorful Mask

V5.5.32 build 201028:



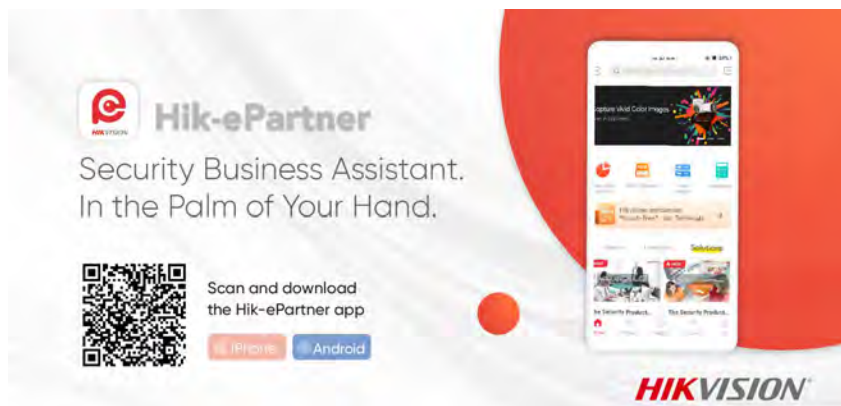
Dark Black Mask

Colorful Mask

04 HIK NEWS

Hik-ePartner is Officially Launched

The Hik-ePartner app is a handy management platform where installers can get easy access to all Hikvision product information, promotions, how-to documents and videos, marketing handouts, and more. Installers will love how the ePartner app helps security business run better every day



Handy product searches

- Easy product search with well-organized and presented products and specifications
- Quick searches using model names and numbers and useful product and accessory filter
- Save all your preferred items to the Favorite List and find them easily when needed

Join our installer rewards program

- Scan SN codes to win points and redeem gifts
- Redeem Shoprite group voucher via Hikvision

Easy binding and switching with Hik-ProConnect App

- our Hik-ProConnect and Hik-ePartner accounts can be easily integrated with each other, adding to management efficiency and flexibility.

DOWNLOAD NOW TO EXPLORE MORE



04 HIK NEWS

Hikvision introduces dedicated series in its DeepinView camera line

Cameras in this Dedicated Subseries come equipped with multiple dedicated algorithms that can be selected and engaged discretely based on the needs of the installation, then switched as the security needs change.



Hikvision, an IoT solution provider with video as its core competency, today announced a brand-new addition to its DeepinView camera line: the Dedicated Subseries. This unprecedented new addition loads a batch of AI-powered deep learning algorithms into each unit, boasting stunning performance and cost-effective pricing.

Enhanced AI capabilities

Over the last few years, artificial intelligence (AI) has been applied in many ways in security markets. As technology advances, AI chipset performance has improved to enable massive computing power using various algorithms and contributing to multi-intelligence functionality and higher accuracy. The new Dedicated DeepinView Cameras are an example of these advances, incorporating several AI-powered deep learning algorithms in one unit. What's more, these algorithms can be switched essentially putting 5 or 6 unique cameras in one housing.

"Embedding switchable algorithms is a significant step for Hikvision to take in its AI product development. In a world of ever-changing technologies and functionalities, this approach creates great value for end users to try new technologies to ensure security, as well as to implement business intelligence and other applications," says Frank Zhang, President of the International Product and Solution Center at Hikvision. "The benefits of our new offerings are numerous including reduced costs, improved efficiency, and speedy and effective incident response."

[Learn More](#)

04 HIK NEWS

Hikvision introduces dedicated series in its DeepinView camera line

Switchable algorithms

The Dedicated DeepinView cameras combine two product categories – the first is vehicle analysis where cameras combine automatic number plate recognition (ANPR) with vehicle attribute recognition. Attributes include the vehicle's make, color, and direction of movement. Typical uses include installation at checkpoints of city streets and at entrances & exits of buildings or industrial parks.

Models in the second category boast six switchable deep learning algorithms in one camera housing, including facial recognition, face counting, hard hat detection, perimeter protection, queue management, and multiple-target-type detection (detecting multiple targets and multiple types of targets at once). Accordingly, users can simply enable an algorithm manually for dedicated use, then later switch the algorithm as needed.

Here is one example: hard hat detection. This algorithm can be used on construction sites to ensure safety and compliance. Specially-equipped DeepinView cameras can precisely distinguish a worker on the site wearing a hard hat from those without, and automatically deliver alerts when the hard hat violation is detected.

Another example: in a retail setting, a face-counting function can be enabled to precisely count customers entering and leaving the store. Repeat customers and store staff can be automatically excluded in the process, helping store managers count new customers with precision.

Flexibility among algorithms enables users to also switch among:

Perimeter protection – to monitor outdoor areas needing security and deliver accurate alarms upon intrusions.

Facial recognition – to grant authorized access to restricted areas in various organizations, such as school laboratories, archive rooms, and hospital pharmacies.

Queue management – to better understand customer wait times, optimize staff levels, and enhance customer experience.

[Learn More](#)



Thank you

Issue 6 to be released