

DS-K1T981 Series Iris Recognition Terminal

Release Notes (2021-12-22)

Device Model: DS-K1T981M DS-K1T981MF Naming Rule: F for fingerprint	Firmware Version	ARM: ACS_981_AI3_EN_STD_V3.3.3_build211222
	iVMS-4200 Version	V3.7.0.5 or later

Reason of Upgrade

New model DS-K1T981 series Iris recognition terminals first time released.



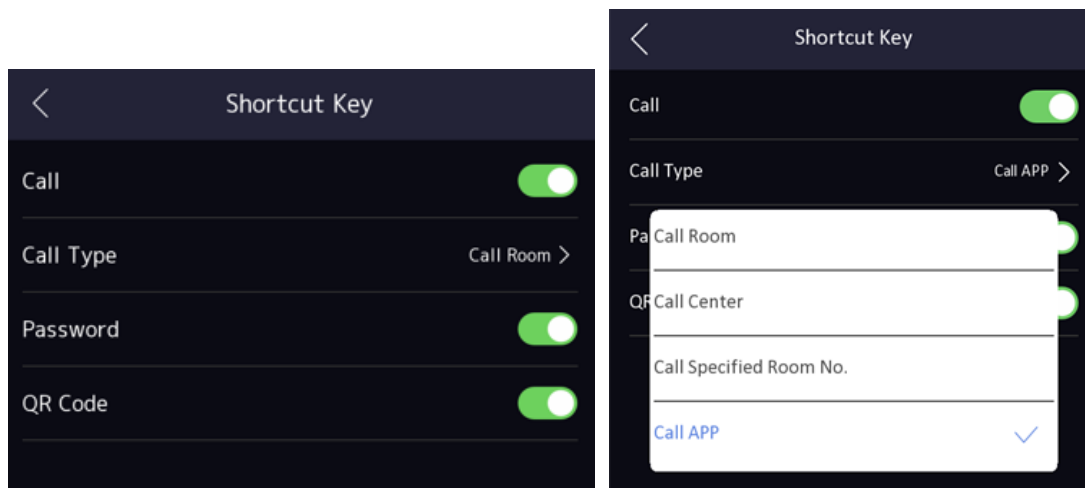
New Features

1. Iris recognition with 8-inch LCD touch screen, 2 MP wide-angle lens for face recognition and 5 MP single lens for iris recognition
2. Connect external card reader or access controller via RS485 or Wiegand26/34 protocol
3. Face recognition duration < 0.2 s/User; face recognition accuracy rate $\geq 99\%$
4. Iris recognition duration < 1 s and registration duration < 5 s
5. Support face mask (enabled in default) and hard-hat detection (disabled in default) function
6. Presents card on the screen to authenticate card permission
7. Face recognition distance: 0.3 m to 3 m; Iris recognition distance: 40 cm to 70 cm

8. Capacity

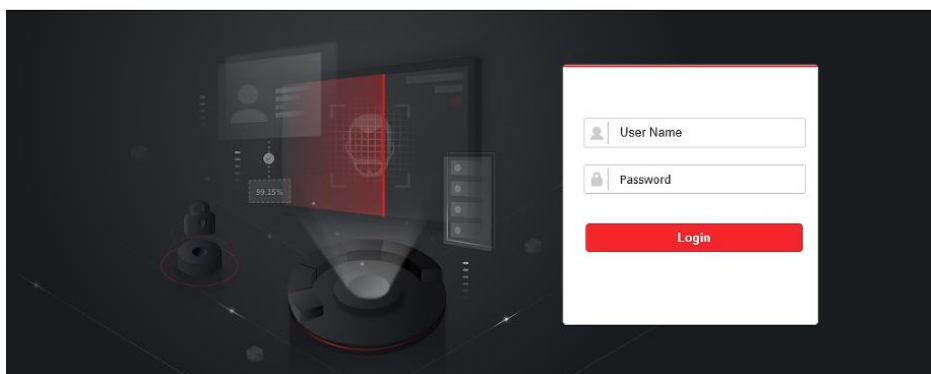
	Iris	Face	Fingerprint	Card	Event	Wi-Fi
DS-K1T981M	10,000	100,000	N/A	100,000	150,000	Support
DS-K1T981MF			5,000	(M1 card)		

9. **ISAPI** protocol makes it easier to integrate with third-party software;
10. Remote video intercom and unlock door from **Hik-Connect** App on your mobile/Pad
11. Support **ISUP 5.0**(EHome 5.0) protocol to manage devices located in different location;
12. Self-defined shortcut key (QR Code, Call and PIN Code) on main interface, **call Hik-Connect App**.

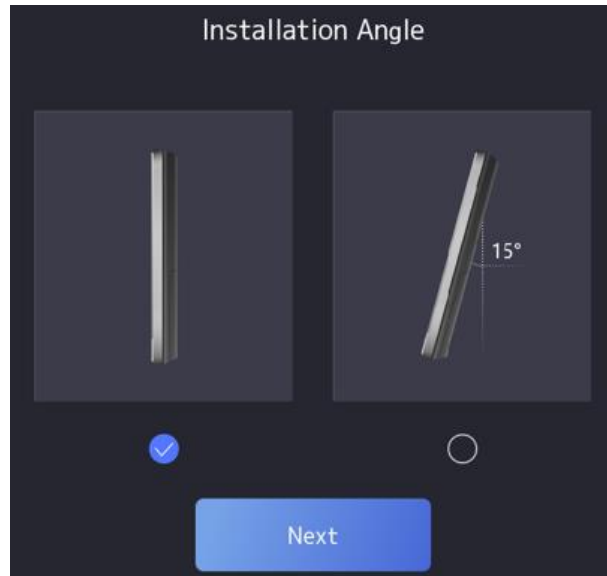


Note: If the QR Code shortcut key is disabled, the device will recognize face and QR code at the same time.

13. Login and configure device in **web client** via browser to realize person management, parameter configuration, log search and system maintenance;



14. **Self-defined voice prompt** (TTS function, English only) for authentication result, set different voice prompts maximum for 4 time periods.
15. Add installation wizard

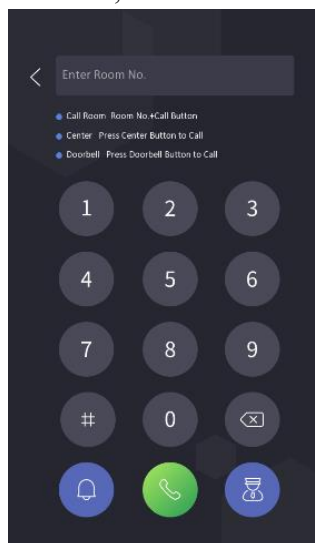


16. Network

Support TCP/IP and Wi-Fi, adapt to LAN (network) or WAN (ISUP 5.0) network environment

17. Function

- a. Video intercom with indoor/main station, hik-connect mobile app and iVMS4200/HikCentral;



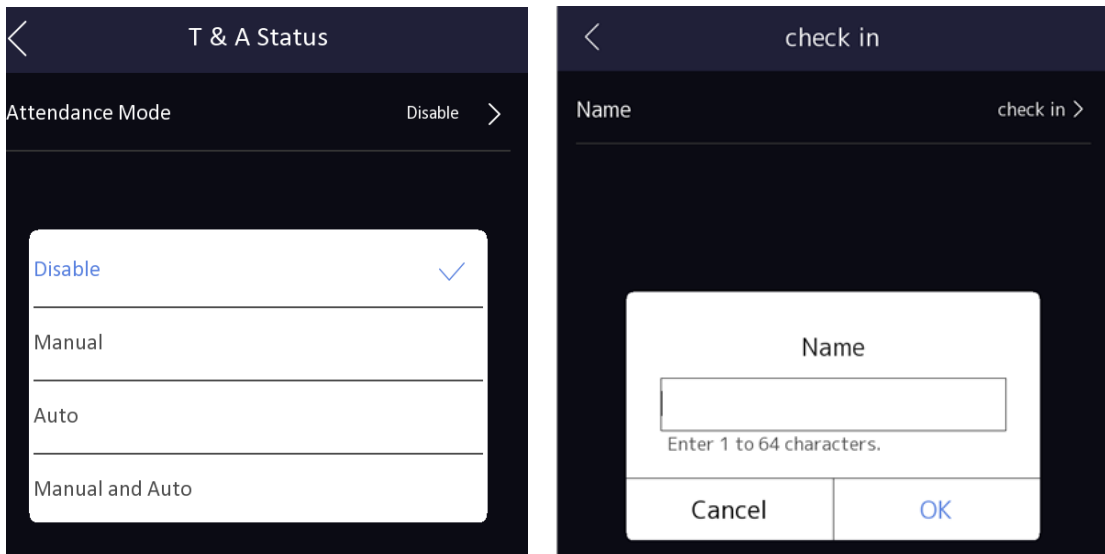
- b. Status bar shows device status in real time, include network status, deployment/arm status, Hik-Connect server connection status



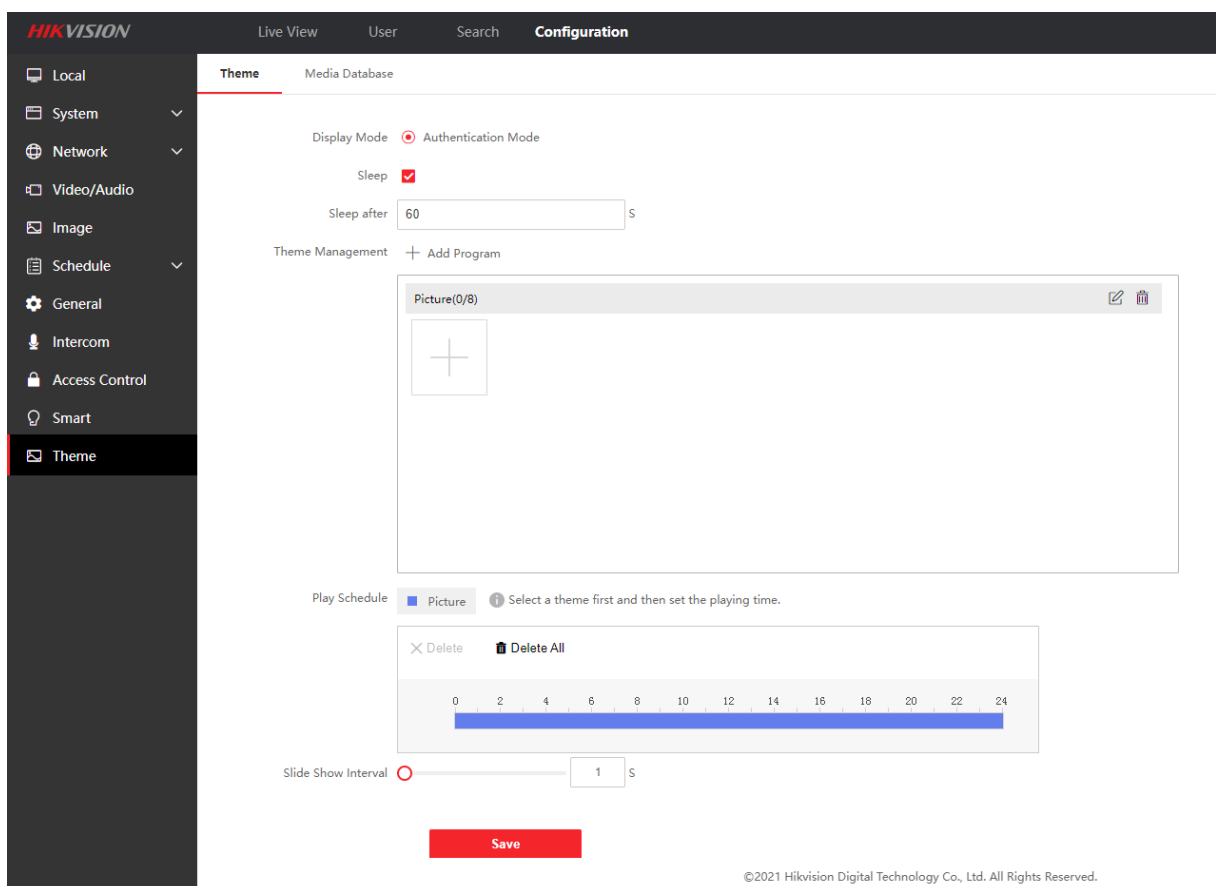
- c. Multiple verification modes: Iris, Face, card, PIN code and QR code;

Note: Iris cannot work with other modes in multiple verification

- d. Support check in/check out/break out/break in/overtime in/overtime out status, and attendance status name supports custom modification



- e. Custom standby background image



Notice about Iris function:

1. Keep the terminal and human eyes away from direct sunlight;
2. We recommend to remove glasses when registering Iris information, it supports Iris recognition by wearing glasses, but the effect is worse than that of the naked eye, mainly due to the reflection of the lens and the stain of the mirror surface of the glasses (myopia/medical glasses, contact lenses)
3. **New menu in device local:**
 - a. Iris continuous recognition interval: the recognition interval of the same person can be interrupted by others
 - b. Support local iris entry, single eye or double eye can be entered (duplicate check is not supported)
 - c. Support single-eye, double-eye, automatic recognition mode, the default is automatic mode
 - d. Support single eye 1VN threshold and double eyes 1VN threshold configuration;
 - e. Support import and export iris data to USB and import to another device.

4. Function about platform:

Support special IVMS version only: V3.4.0.101, and HikCentral Professional will be available soon.

- a. Remote iris data collection
- b. Apply iris data to device
- c. Get person data(including iris data) from device to iVMS

Customer Impact and Recommended Action

This update refers to function/compatibility improvement and will take effect automatically after the Date of Change. We are very sorry for any inconvenience of use-habit changes caused by this action.

For any questions and request for this firmware, please contact our local technical support team.

Note:

- Hikvision reserves the right to change, alter or withdraw the above notification without prior notice.
- Product design and specifications are subject to change without prior notice.
- The Hikvision firmware may contain errors known as errata, which may cause the product to deviate from published specifications. Current characterized errata are available on request.
- Hikvision is not liable for any typing or printing errors.

Hikvision Digital Technology CO., Ltd.
No. 555 Qianmo Road, Binjiang District, Hangzhou 310051,
China
Tel: +86-571-8807-5998
FAX: +86-571-8993-5635
Email: overseabusiness@hikvision.com