



如何配置 26 系列控制器防区断路报警联动

**How to configure Event Linkage of Zone Disconnect  
Alarm for the 26 series Access Controller**

<b>Title:</b>	How to configure Zone Disconnect Alarm Linkage for the 26 series Access Controller	<b>Version:</b>	v1.0	<b>Date:</b>	24/08/2022
<b>Product:</b>	Access Controller			<b>Page:</b>	1 of 4

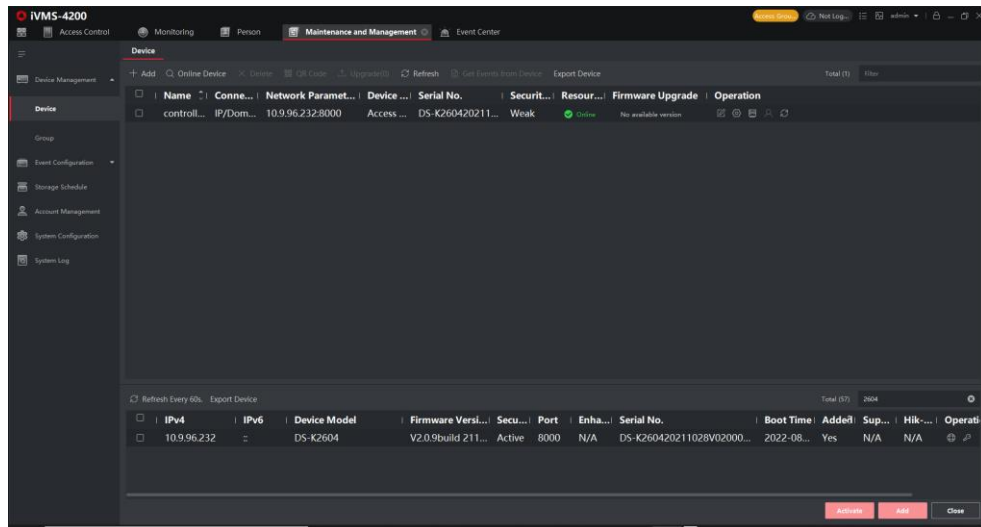
## Preparation

Type	Model	Version
Access Controller	DS-K2604	
Face Recognition Terminal	DS-K1T341AM	
Fingerprint Card Reader	DS-K1201MF	
Magnetic Lock	DS-k4H250D	
Wired PIP-Glass Break Detector	DS-PDPG12P-EG2	

## How to configure Zone Disconnect Alarm Linkage for the 26 series Access Controller

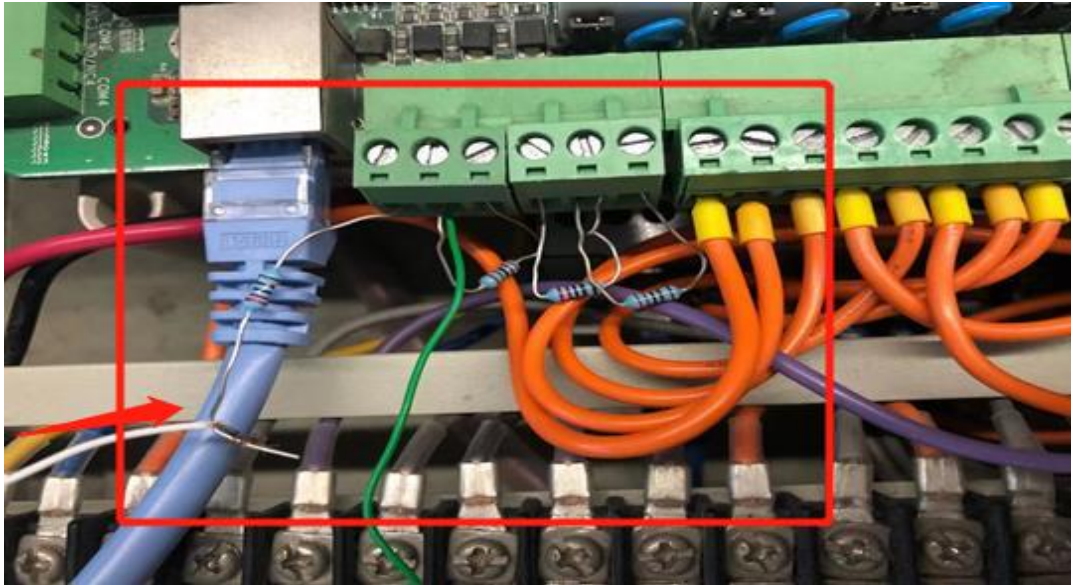
### 1. Access Controller configuration.

- 1) Connect the controller to the Ethernet, search the device IP address via the SADP software.
- 2) Adding the controller to IVMS-4200 platform.

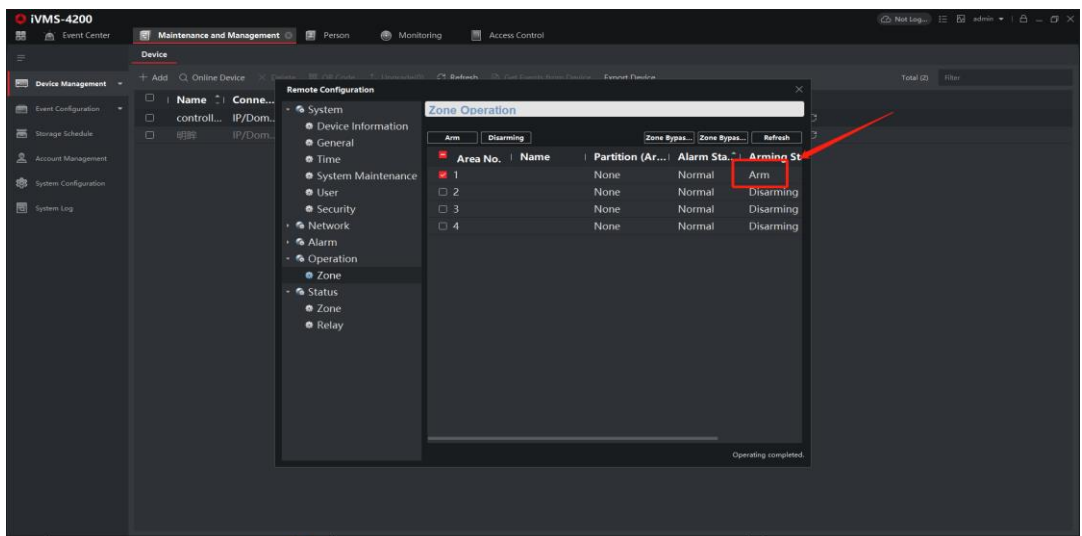
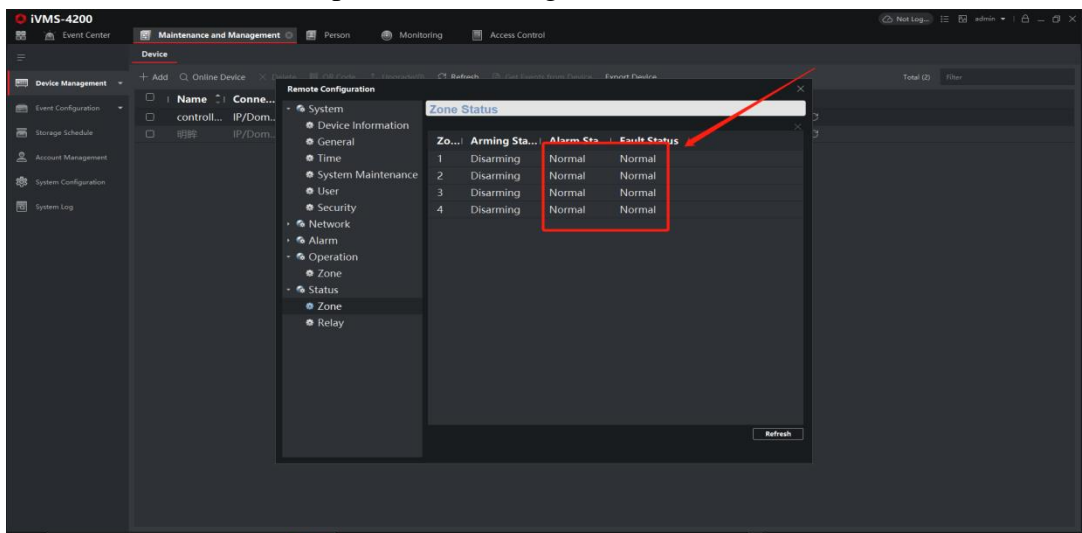


### 2. Test the Zone Status and Event Type

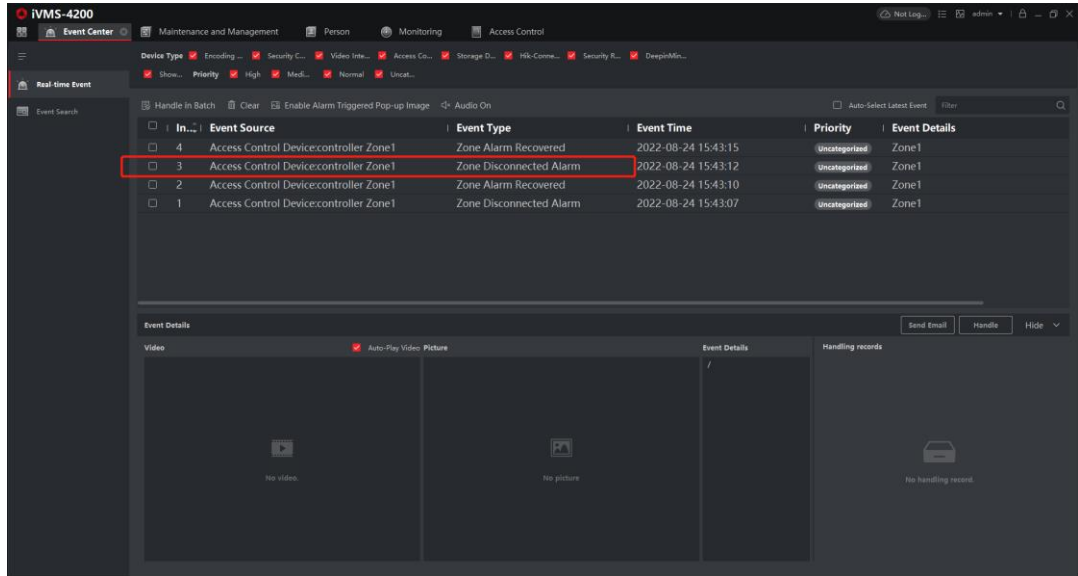
- 1) Connect in parallel with the load resistance to the Zone and connect the detector in series to the circuit of Zone 1.



2) Click the Remote Configuration button, check the Zone Status to make sure it Normal, next click Operation to configure Zone 1 to become Arm.

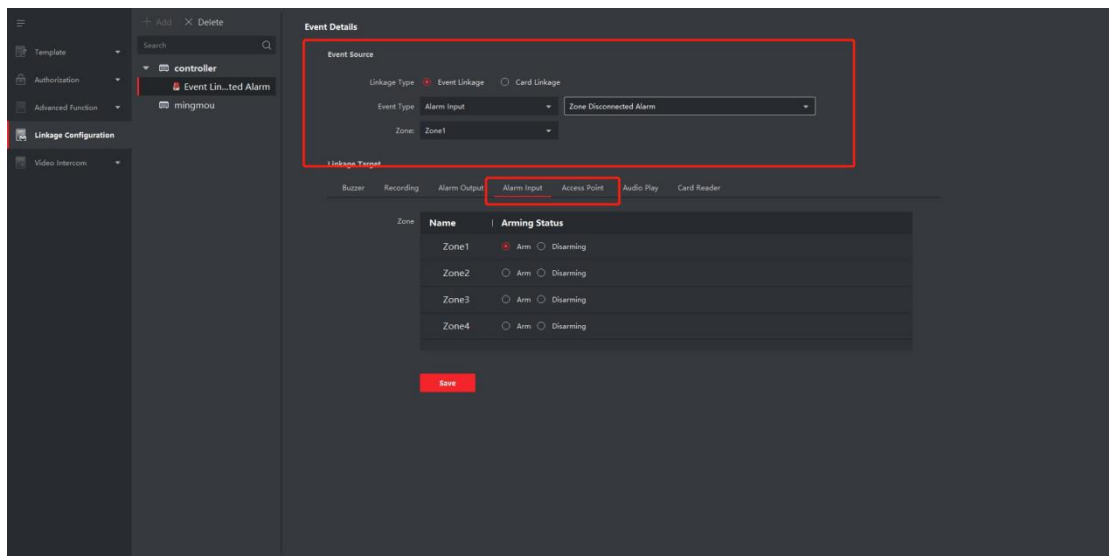


- Use the detector to test the correct Event Source and Event Type, and check it in the Event Center, then you can know the correct event type as shown below.

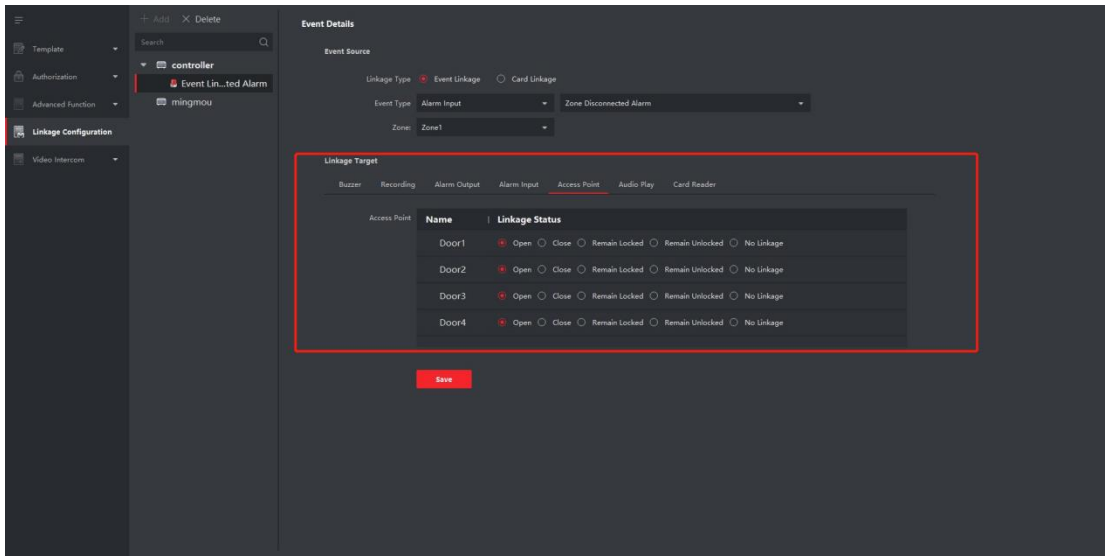


### 3. Configure Zone Disconnected Alarm Event Linkage

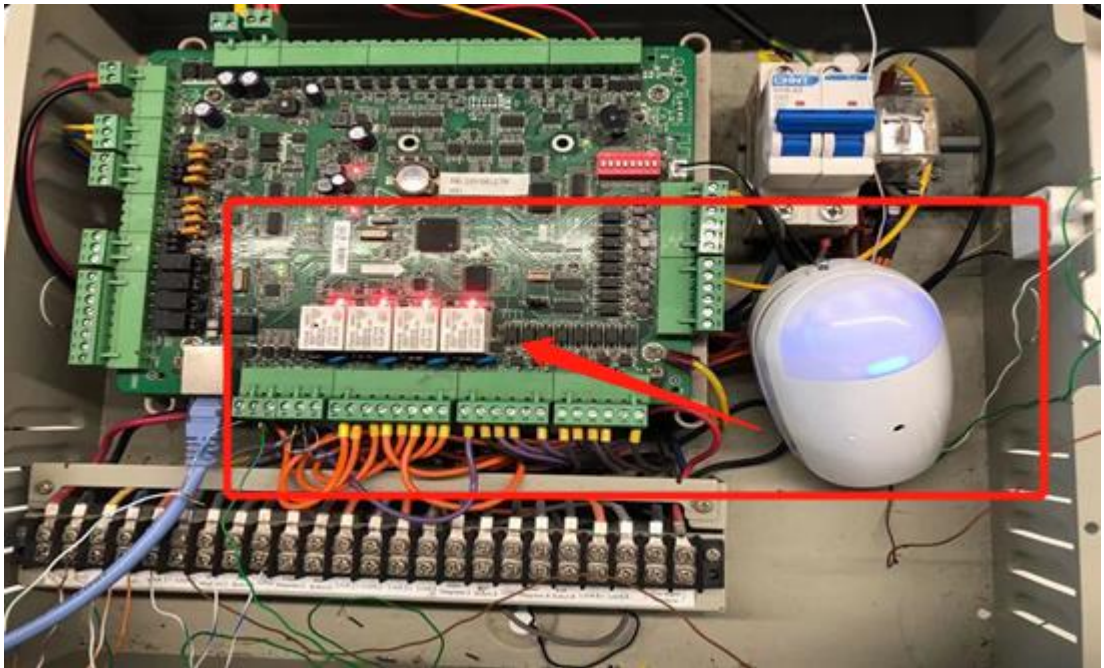
- Enter Access Control- Linkage Configuration to add Event Linkage for 26 Series controllers. Select the Event Type as Alarm Input and Zone Disconnected Alarm for Zone 1.



- Configure the Linkage Target as you need, such as select Access Point to linkage the Door Open.



3) Test the event to make sure the linkage work.





See Far, Go Further