

The HIKVISION logo is displayed in white, italicized, uppercase letters on a red background. The background consists of a horizontal bar with a white diagonal stripe on the left side.

HIKVISION

如何配置 26 系列控制器防区短路报警的事件联动

**How to configure Event Linkage of Zone Short
Circuited Alarm for the 26 series Access Controller**

Title:	How to configure Event Linkage of Zone Short Circuited Alarm for the 26 series Access Controller	Version:	v1.0	Date:	24/08/2022
Product:	Access Controller			Page:	1 of 6

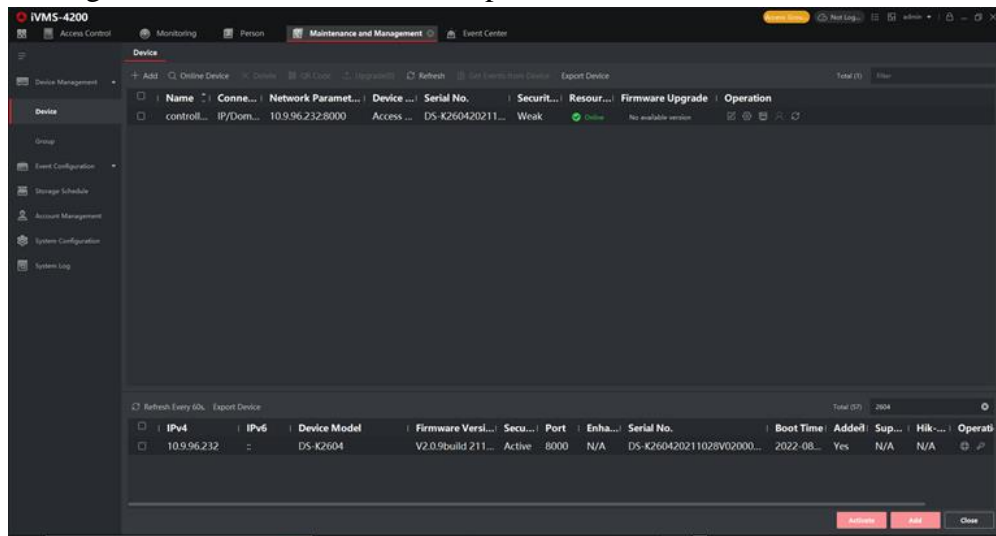
Preparation

Type	Model	Version
Access Controller	DS-K2604	
Face Recognition Terminal	DS-K1T341AM	
Fingerprint Card Reader	DS-K1201MF	
Magnetic Lock	DS-k4H250D	
Wired PIP-Glass Break Detector	DS-PDPG12P-EG2	

How to configure Event Linkage of Zone Short Circuited Alarm for the 26 series Access Controller

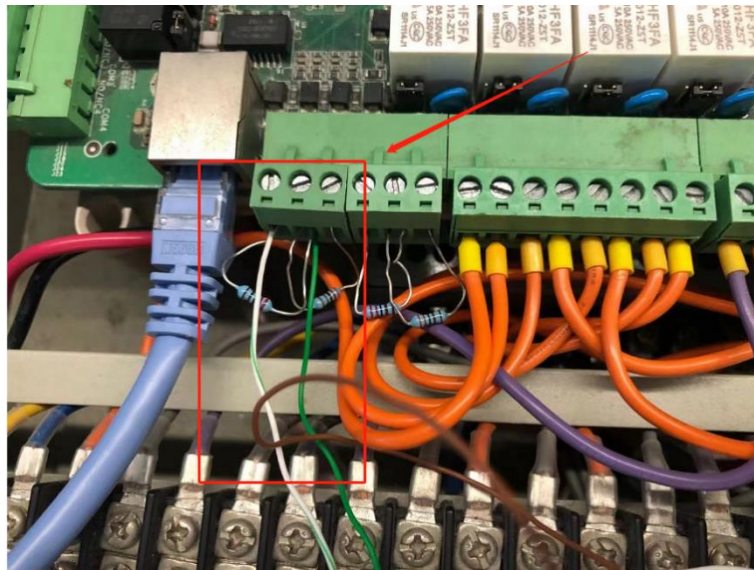
1. Access Controller configuration.

- 1) Connect the controller to the Ethernet, search the device IP address via the SADP software.
- 2) Adding the controller to IVMS-4200 platform.



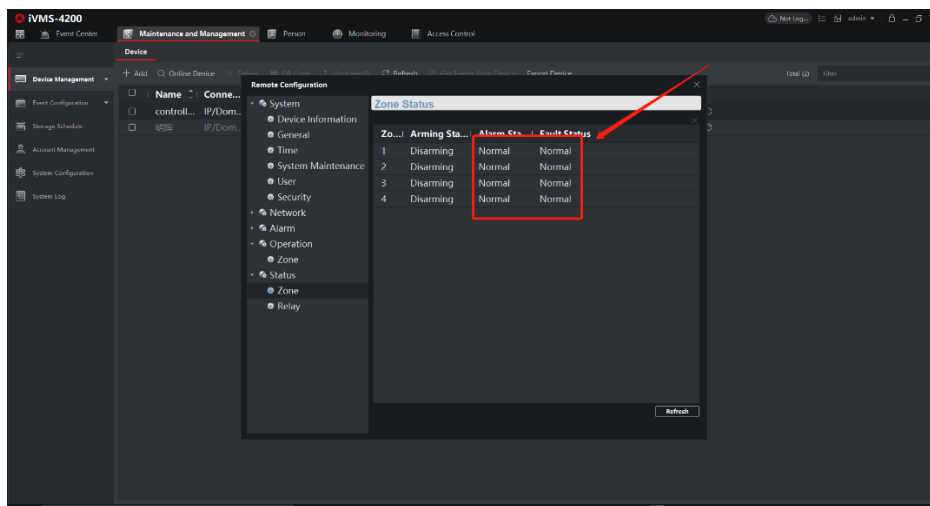
2. Parallel Detector in Zone 1.

- 1) Parallel Detector in Zone 1, as shown below.

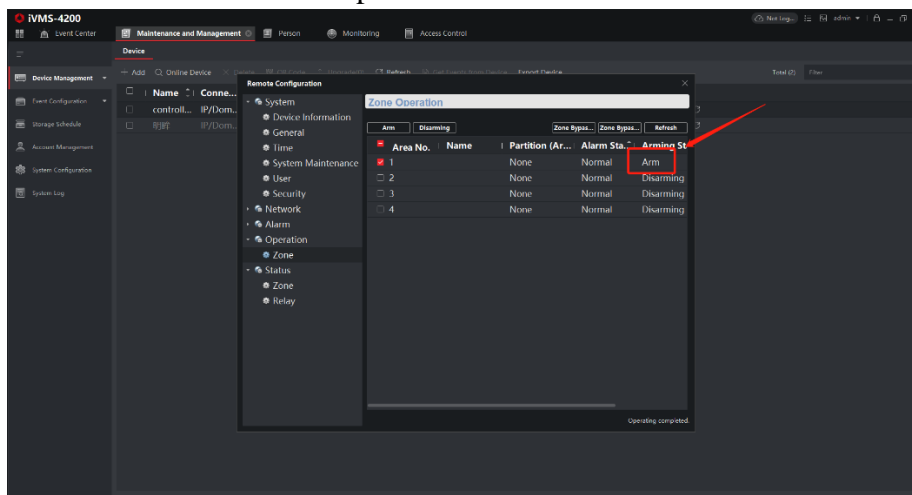


3. Configure the arming status

- 1) Make sure all four Arm Statuses for Zone Operation are Normal.

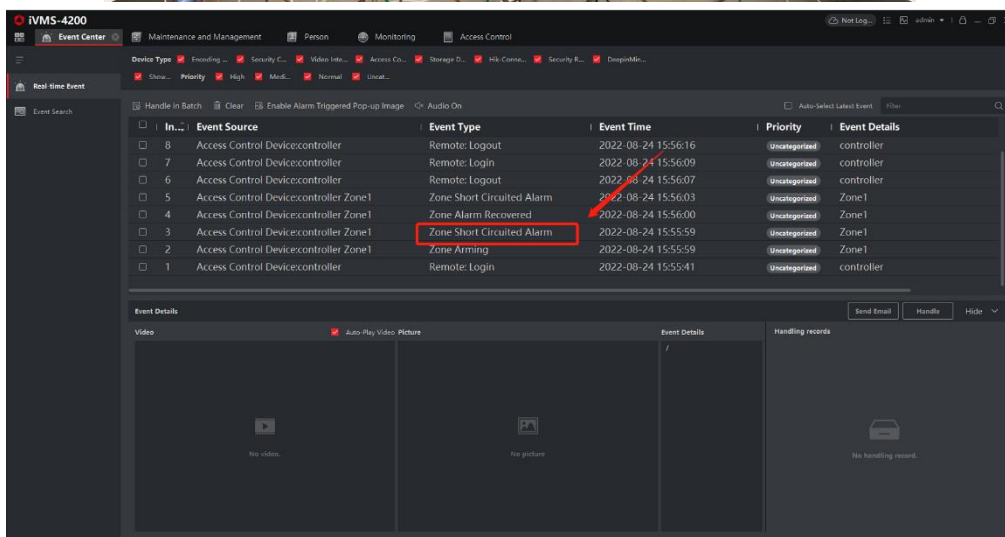
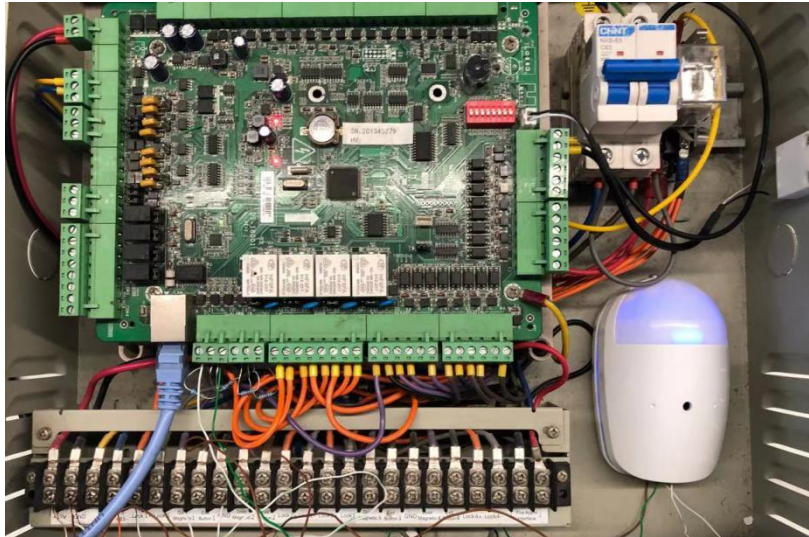


- 2) Arm Zone1 in the Zone Operation



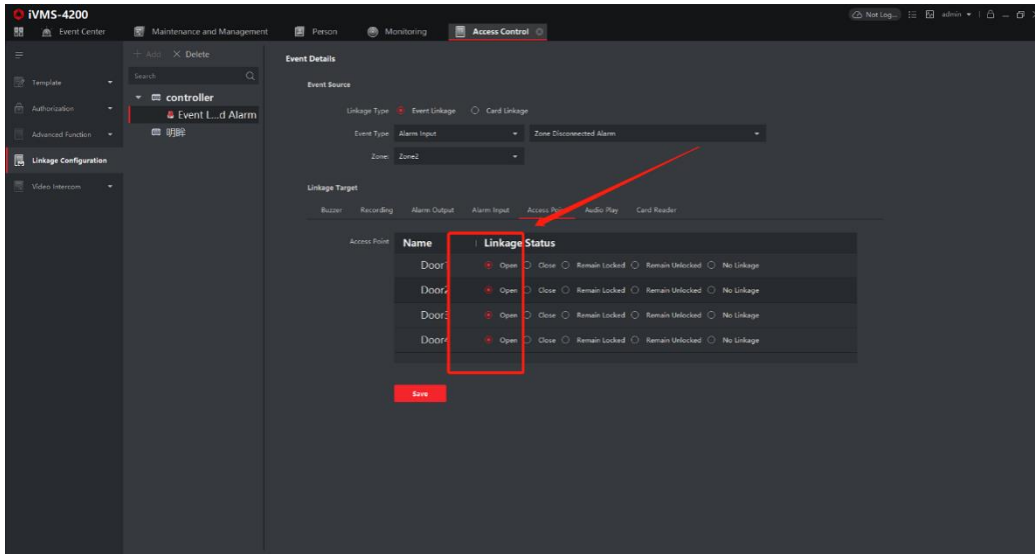
4. Test the correct Event Source and Event Type

- 1) Test the correct Event Source and Event Type with the Detector and check it in the Event Center, as shown below.



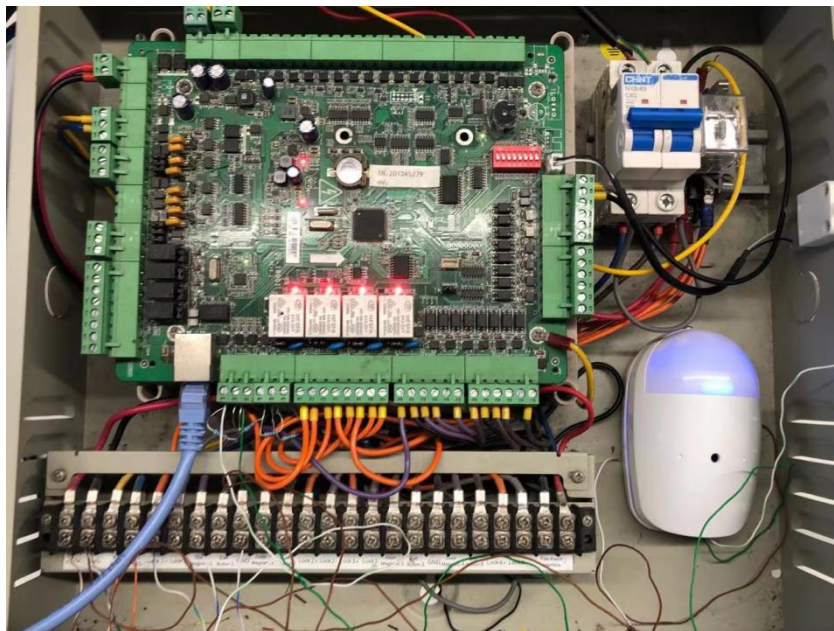
5. Configure Event Linkage of Zone Short Circuited Alarm

- 1) Enter Access Control- Linkage Configuration- + Add to configure Event Linkage of Zone Short Circuited Alarm for 26 Series controllers . Make sure that the Event Type is consistent with the test results above.You can start configuring the event linkage you need (for example: linkage four doors open) , as shown below.



6. Use the Detector to detect Event Linkage of Zone Short Circuited Alarm

- 1) Use the Detector to detect Event Linkage of Zone Short Circuited Alarm .The four lights are fully illuminated, indicating that the Event Linkage of Zone Short Circuited Alarm is successful.





See Far, Go Further